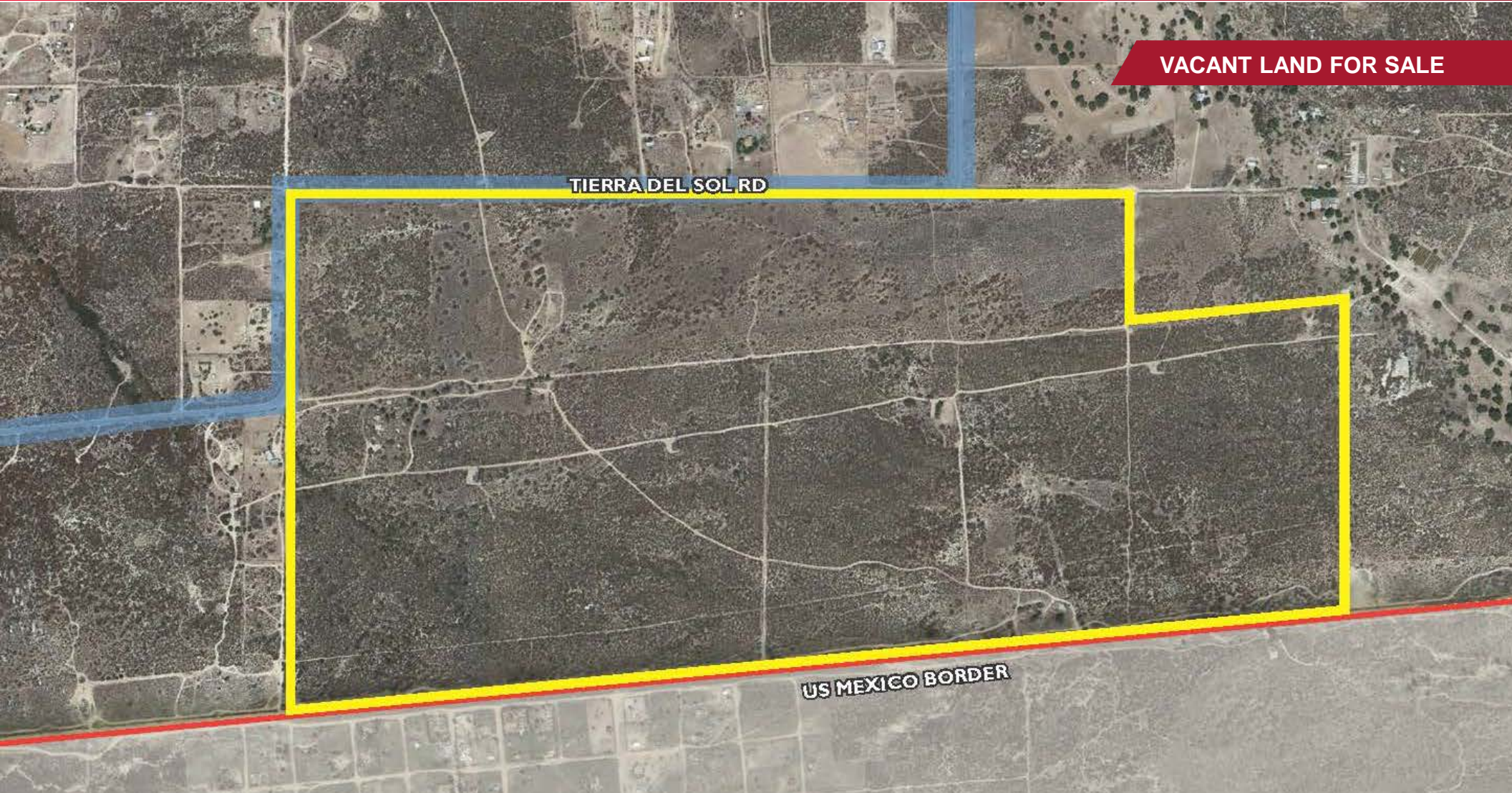




424 ACRES

US/MEXICAN BORDER

Boulevard, California



VACANT LAND FOR SALE

TIERRA DEL SOL RD

US MEXICO BORDER

MATT DAVIS
Associate Director
(858) 334 4026
matt.davis@cushwake.com
Lic. #1758818

TERRY JACKSON
Director
(858) 558 5685
terry.jackson@cushwake.com
Lic. #00669485

DON YAHN
Executive Director
(949) 930 9251
don.yahn@cushwake.com
Lic. #00990928

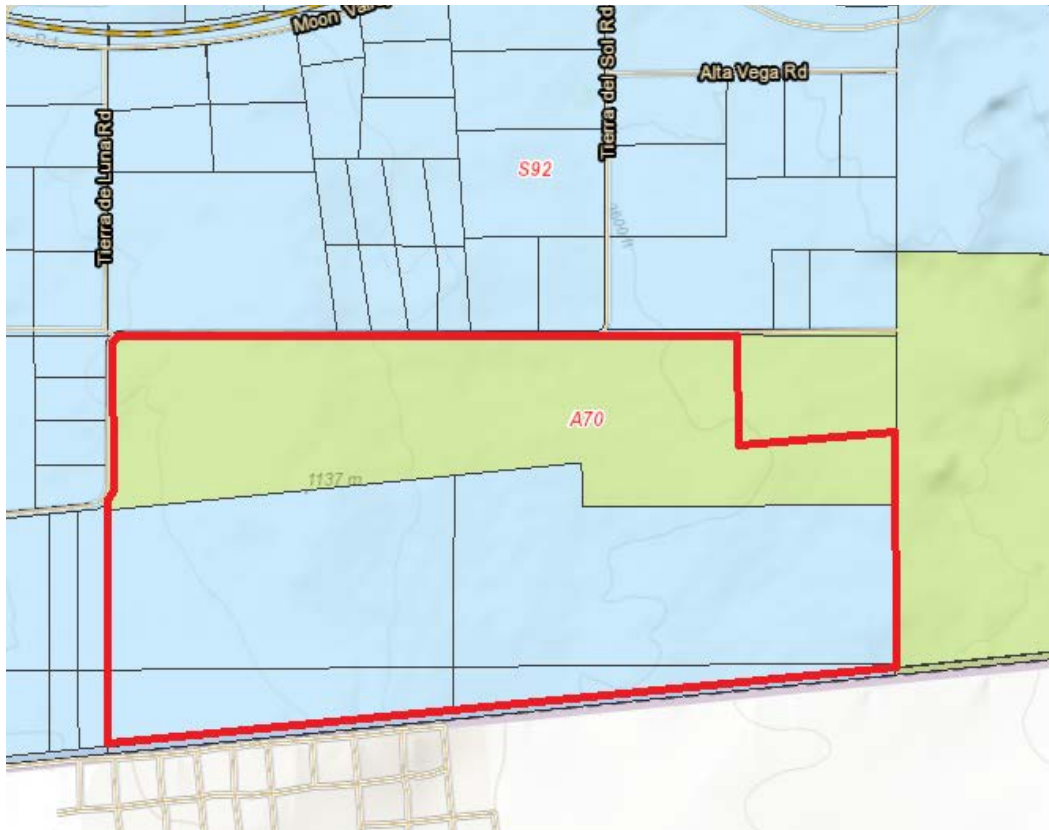
BRETT SWARTZBAUGH
Associate Director
(949) 930 9217
brett.swartzbaugh@cushwake.com
Lic. #01742530

CUSHMAN & WAKEFIELD OF SAN DIEGO, INC.
Lic. #01329963
4747 Executive Dr., 9th Floor
San Diego, CA 92121

CUSHMAN & WAKEFIELD, INC.
Lic. #00616335
2020 Main Street Ste 1000
Irvine, CA 92614

cushmanwakefield.com

ZONING MAP



FEATURES

- Address: 905 Tierra del Sol Road, Boulevard, CA 91905
- Zoning:
 - S92 – General Rural
 - A70 – Limited Agriculture
- Improvements:
 - Rural Land with Electricity to site
 - Existing wells onsite, condition unknown
- APNs:
 - 658-090-31 – 155.58 acres (A-70)
 - 658-090-54 – 116.85 acres (S-92)
 - 658-090-55 – 97.1 acres (S-92)
 - 658-120-02 – 15.97 acres (S-92)
 - 658-120-03 – 34.15 acres (S-92)



424 ACRES

US/MEXICAN BORDER

Boulevard, California

PROPERTY PHOTOS



MATT DAVIS
Associate Director
(858) 334 4026
matt.davis@cushwake.com
Lic. #1758818

TERRY JACKSON
Director
(858) 558 5685
terry.jackson@cushwake.com
Lic. #00669485

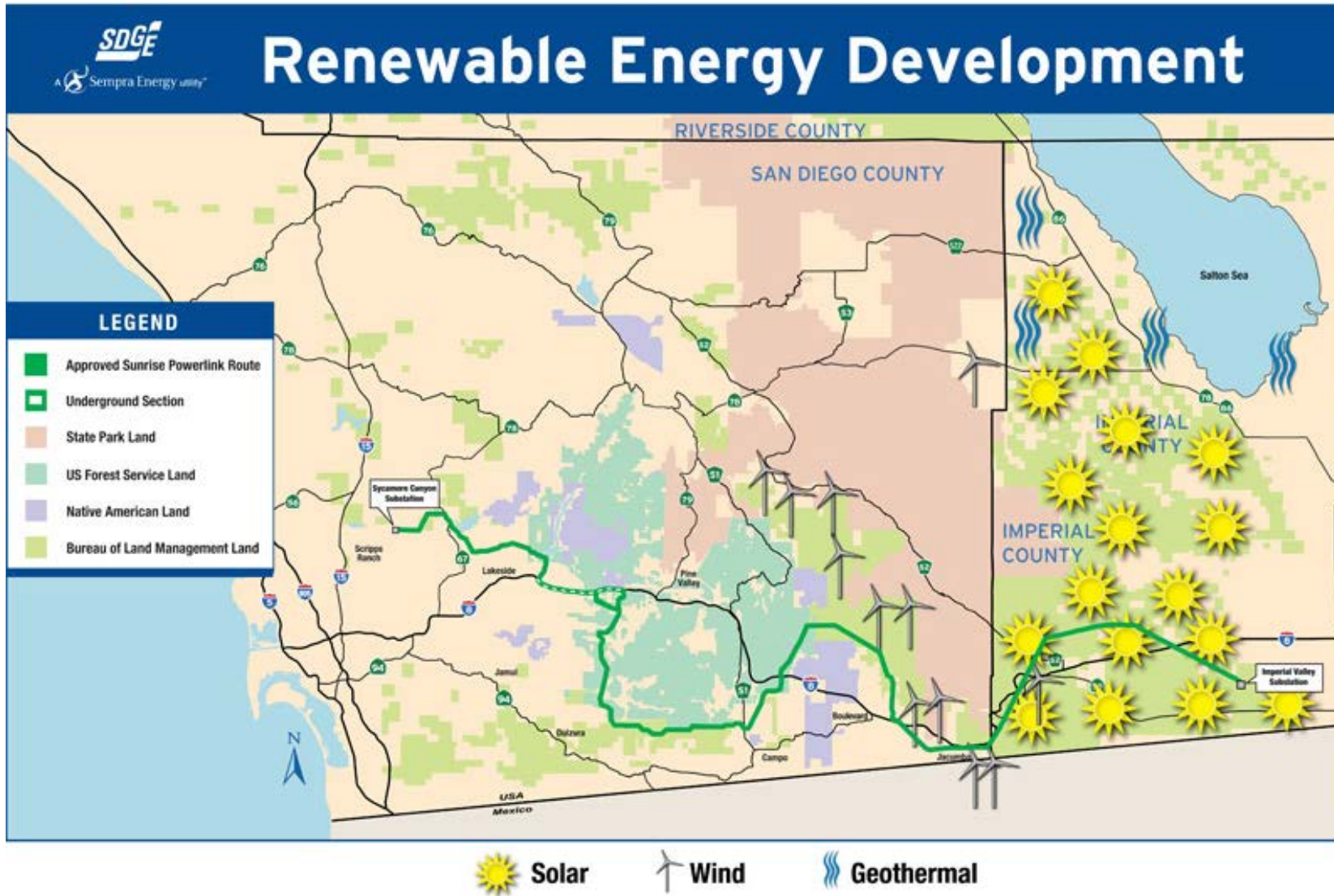
DON YAHN
Executive Director
(949) 930 9251
don.yahn@cushwake.com
Lic. #00990928

BRETT SWARTZBAUGH
Associate Director
(949) 930 9217
brett.swartzbaugh@cushwake.com
Lic. #01742530

CUSHMAN & WAKEFIELD OF SAN DIEGO, INC.
Lic. #01329963
4747 Executive Dr., 9th Floor
San Diego, CA 92121

CUSHMAN & WAKEFIELD, INC.
Lic. #00616335
2020 Main Street Ste 1000
Irvine, CA 92614

cushmanwakefield.com



MATT DAVIS
Associate Director
(858) 334 4026
matt.davis@cushwake.com
Lic. #1758818

TERRY JACKSON
Director
(858) 558 5685
terry.jackson@cushwake.com
Lic. #00669485

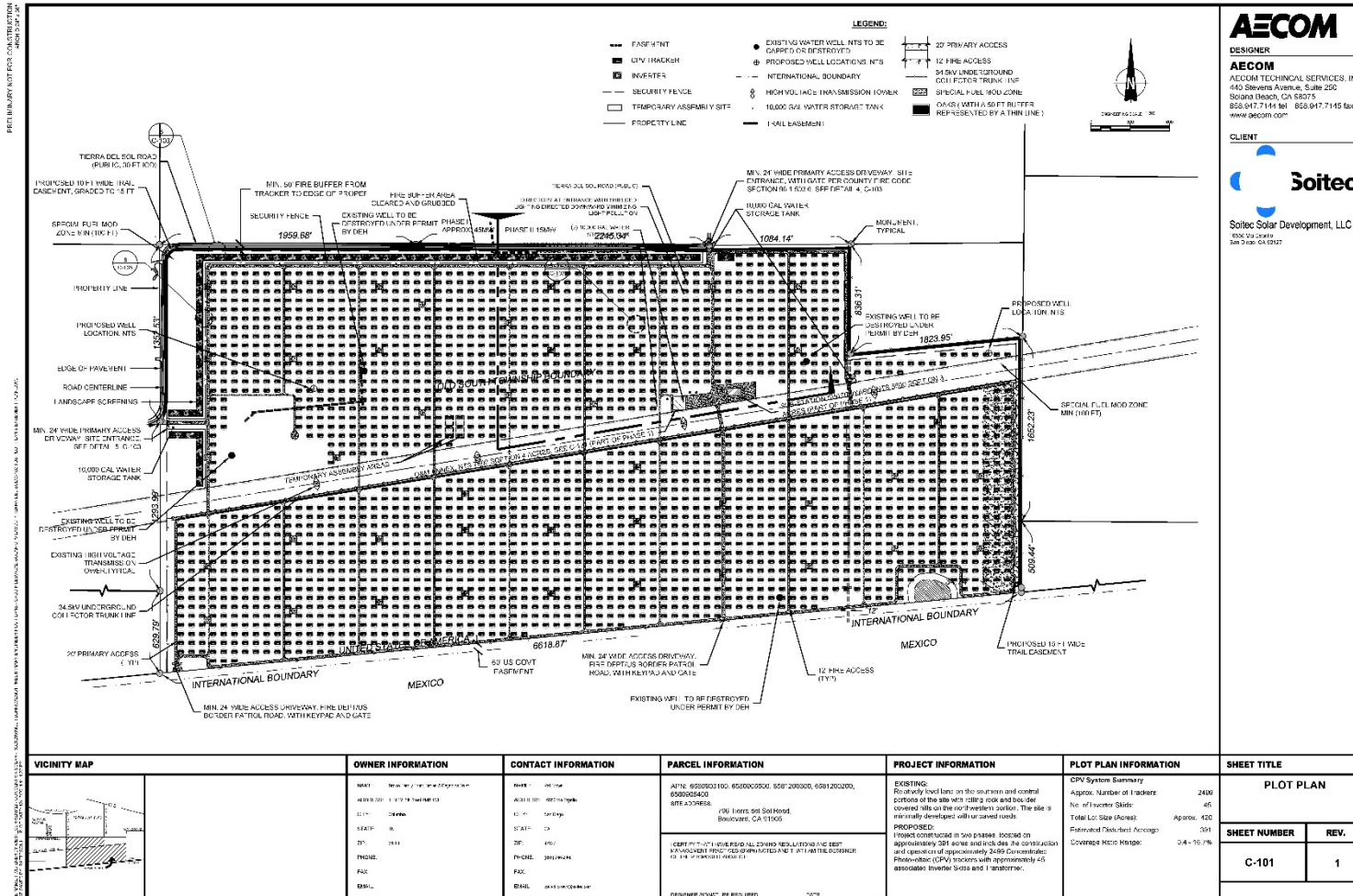
DON YAHN
Executive Director
(949) 930 9251
don.yahn@cushwake.com
Lic. #00990928

BRETT SWARTZBAUGH
Associate Director
(949) 930 9217
brett.swartzbaugh@cushwake.com
Lic. #01742530


CUSHMAN & WAKEFIELD OF SAN DIEGO, INC.
Lic. #01329963
4747 Executive Dr., 9th Floor
San Diego, CA 92121

CUSHMAN & WAKEFIELD, INC.
Lic. #00616335
2020 Main Street Ste 1000
Irvine, CA 92614

PREVIOUSLY PROPOSED 60 MW CPV PROJECT



AECOM
 DESIGNER
AECOM
 AECOM TECHNICAL SERVICES, INC.
 140 Stevens Avenue, Suite 200
 San Jose, CA 95127
 858.917.7141 tel 858.917.7145 fax
 www.aecom.com

CLIENT

Soitec
 Soitec Solar Development, LLC
 1636 Via Central
 San Diego, CA 92127

MATT DAVIS
 Associate Director
 (858) 334 4026
 matt.davis@cushwake.com
 Lic. #1758818

TERRY JACKSON
 Director
 (858) 558 5685
 terry.jackson@cushwake.com
 Lic. #00669485

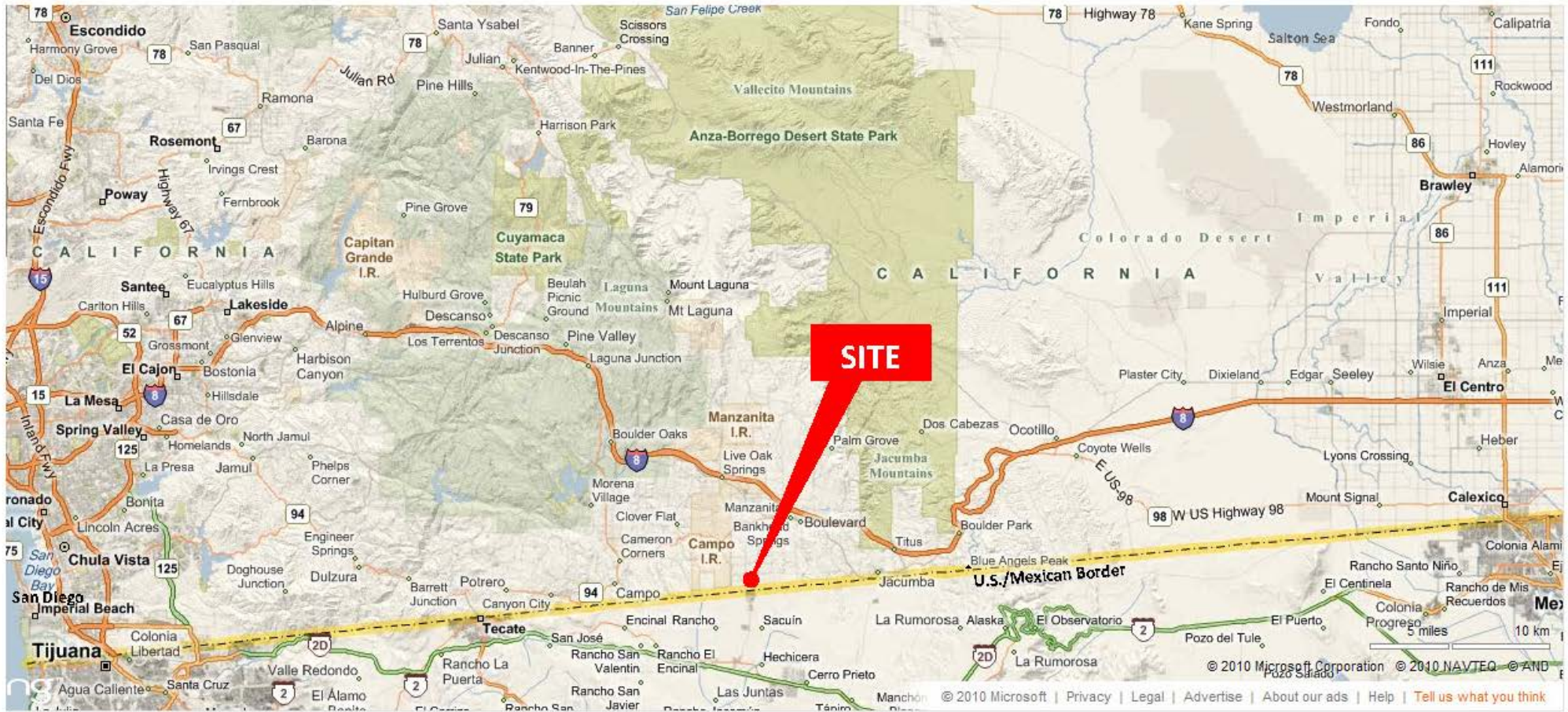
DON YAHN
 Executive Director
 (949) 930 9251
 don.yahn@cushwake.com
 Lic. #00990928

BRETT SWARTZBAUGH
 Associate Director
 (949) 930 9217
 brett.swartzbaugh@cushwake.com
 Lic. #01742530

CUSHMAN & WAKEFIELD OF SAN DIEGO, INC.
 Lic. #01329963
 4747 Executive Dr., 9th Floor
 San Diego, CA 92121

CUSHMAN & WAKEFIELD, INC.
 Lic. #00616335
 2020 Main Street Ste 1000
 Irvine, CA 92614

LOCATION MAP



MATT DAVIS
Associate Director
(858) 334 4026
matt.davis@cushwake.com
Lic. #1758818

TERRY JACKSON
Director
(858) 558 5685
terry.jackson@cushwake.com
Lic. #00669485

DON YAHN
Executive Director
(949) 930 9251
don.yahn@cushwake.com
Lic. #00990928

BRETT SWARTZBAUGH
Associate Director
(949) 930 9217
brett.swartzbaugh@cushwake.com
Lic. #01742530

CUSHMAN & WAKEFIELD OF SAN DIEGO, INC.
Lic. #01329963
4747 Executive Dr., 9th Floor
San Diego, CA 92121

CUSHMAN & WAKEFIELD, INC.
Lic. #00616335
2020 Main Street Ste 1000
Irvine, CA 92614