



CUSHMAN & WAKEFIELD

FOR SALE

RARE DEVELOPMENT OPPORTUNITY

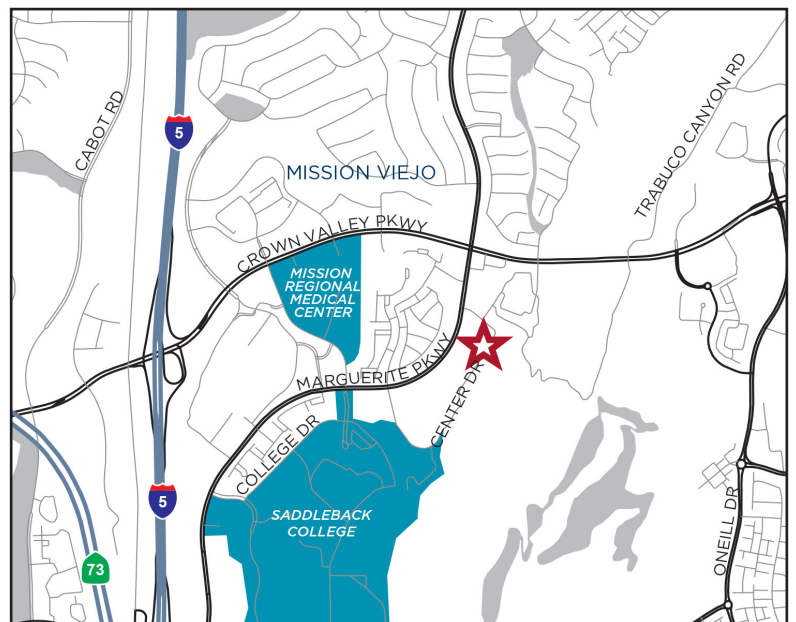
Mission Viejo, CA



Vacant Land Site 80,586 SF
Approximate Net Land Area **47,000 SF**

Property Highlights

- APN Nos.: 740-111-14 & 740-111-15
- Marguerite Pkwy at Hillcrest/Center Dr
- Monument Signage Possible
- Zoned Business Park/Industrial (BP)
- Multiple Commercial Possibilities
- Excellent access to major arterial roadways, I-5 Freeway and 73 Toll Road



Don Yahn
Executive Director
+1 949 930 9251
don.yahn@cushwake.com
LIC #00990928

Brett Swartzbaugh
Director
+1 949 930 9217
brett.swartzbaugh@cushwake.com
LIC #01742530

2020 Main Street
Suite 1000
Irvine, CA 92614
main +1 949 474 4004
fax +1 949 474 0405
cushmanwakefield.com

Cushman & Wakefield Copyright 2017. No warranty or representation, express or implied, is made to the accuracy or completeness of the information contained herein, and same is submitted subject to errors, omissions, change of price, rental or other conditions, withdrawal without notice, and to any special listing conditions imposed by the property owner(s). As applicable, we make no representation as to the condition of the property (or properties) in question.

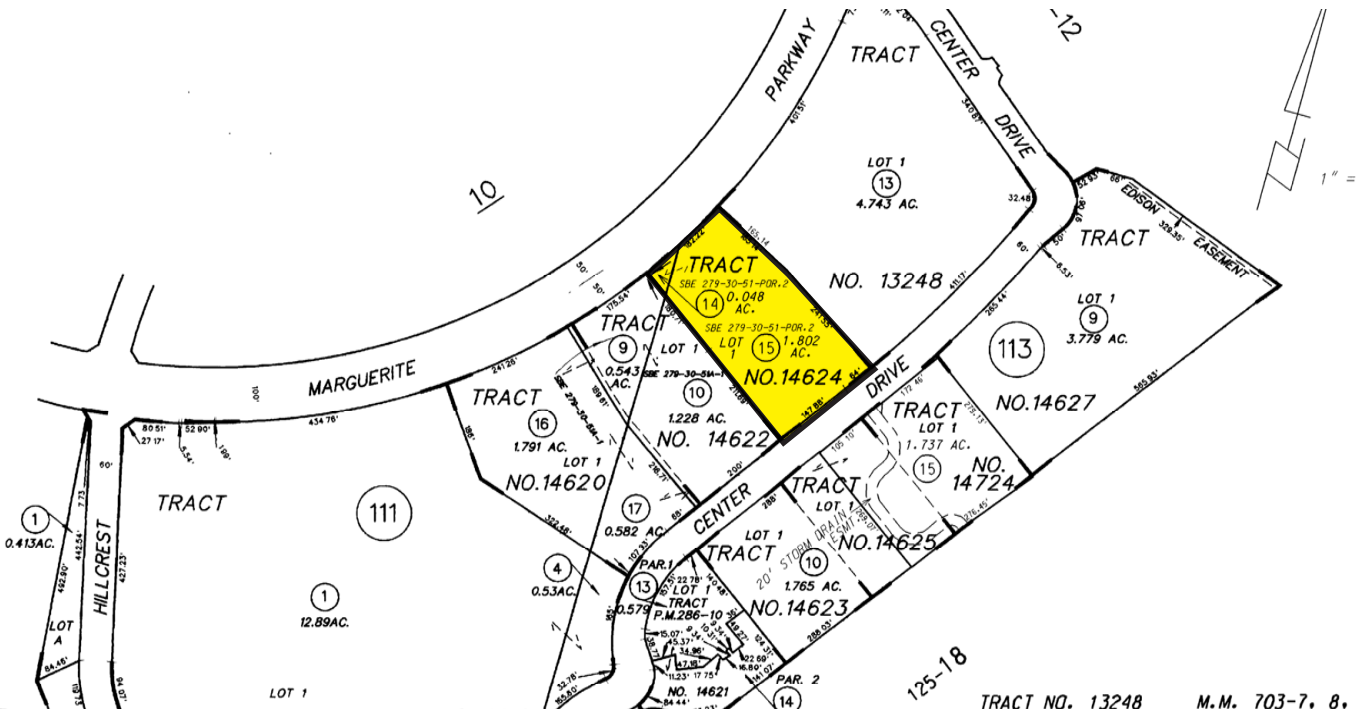


CUSHMAN & WAKEFIELD

FOR SALE

RARE DEVELOPMENT OPPORTUNITY

Mission Viejo, CA



Don Yahn
Executive Director
+1 949 930 9251
don.yahn@cushwake.com
LIC #00990928

Brett Swartzbaugh
Director
+1 949 930 9217
brett.swartzbaugh@cushwake.com
LIC #01742530

2020 Main Street
Suite 1000
Irvine, CA 92614
main +1 949 474 4004
fax +1 949 474 0405
cushmanwakefield.com

Cushman & Wakefield Copyright 2017. No warranty or representation, express or implied, is made to the accuracy or completeness of the information contained herein, and same is submitted subject to errors, omissions, change of price, rental or other conditions, withdrawal without notice, and to any special listing conditions imposed by the property owner(s). As applicable, we make no representation as to the condition of the property (or properties) in question.